

# CERTIFICATE OF LOCATION OF GOVERNMENT CORNER

NORTHEAST Corner of Section 21, Township 105, Range 43, 5TH P.M.

STATE OF MINNESOTA, County of MURRAY

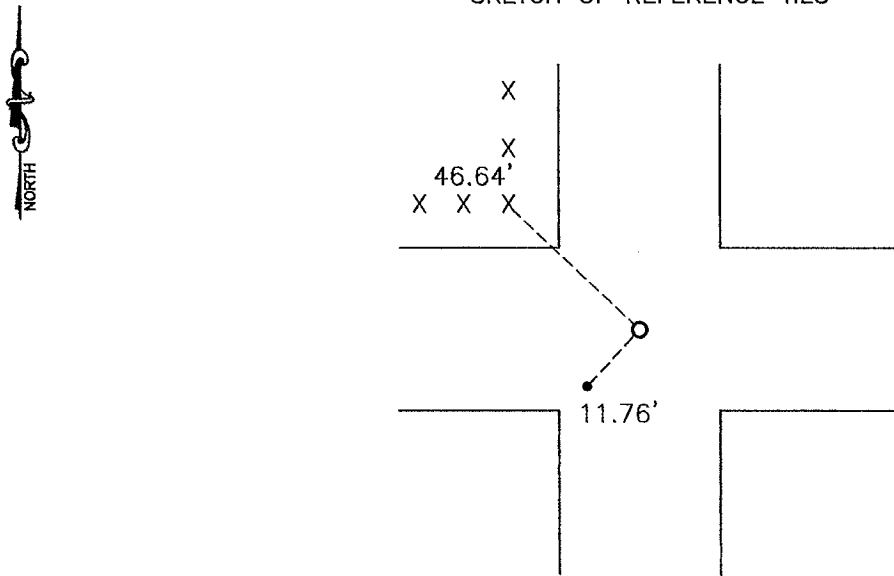
At the corner location shown on the sketch:

On \_\_\_\_\_ found a \_\_\_\_\_

left monument as found,  lowered monument,  removed monument (explain)

On 10-21-2008 placed a 1" PIPE WITH SEAL #43844

### SKETCH OF REFERENCE TIES



Minnesota State Plane Coordinate  
System Murray County Datum  
NAD83 (1996)

N: 116249.793  
E: 437397.819

Nail and seal in corner fence post NW 46.64'  
Pipe with seal #42604 SW 11.76'

Statement of evidence relative to this corner location is on back of page.

I hereby certify that this document and the data contained herein was prepared by me or under my direct supervision.

James V. Johnson 3/5/09  
SIGNATURE DATE

Registration No. 43844

Land Surveyor,  Professional Engineer  
 County Surveyor,  County Engineer

OFFICE OF THE COUNTY RECORDER  
County of \_\_\_\_\_

I hereby certify that this document was filed in the Co. Recorders office at \_\_\_\_\_ .M on the \_\_\_\_\_ day of \_\_\_\_\_ A.D. 20 \_\_\_\_\_

County Recorder James V. Johnson  
By \_\_\_\_\_, Deputy

DOCUMENT NO. JUL 10 2009

## Statement of Evidence

In 1866, J. W. Bishop did the original subdivision of the township.

On June 19, 1913, the corner was recorded as being 47' north and 45' east of the corner fence post.

On August 9, 2006, a  $\frac{1}{2}$ " pipe with seal #42604 was set using the lost method. It fell 7' south and 9' west of the center of the intersection.

On October 21, 2008, Bueltel-Moseng Land Surveying dug with a backhoe in the center of the intersection. We found nothing. We set a 1" iron pipe with seal #43844 using the obliterated method. The center of the intersection is existing evidence of the corner.